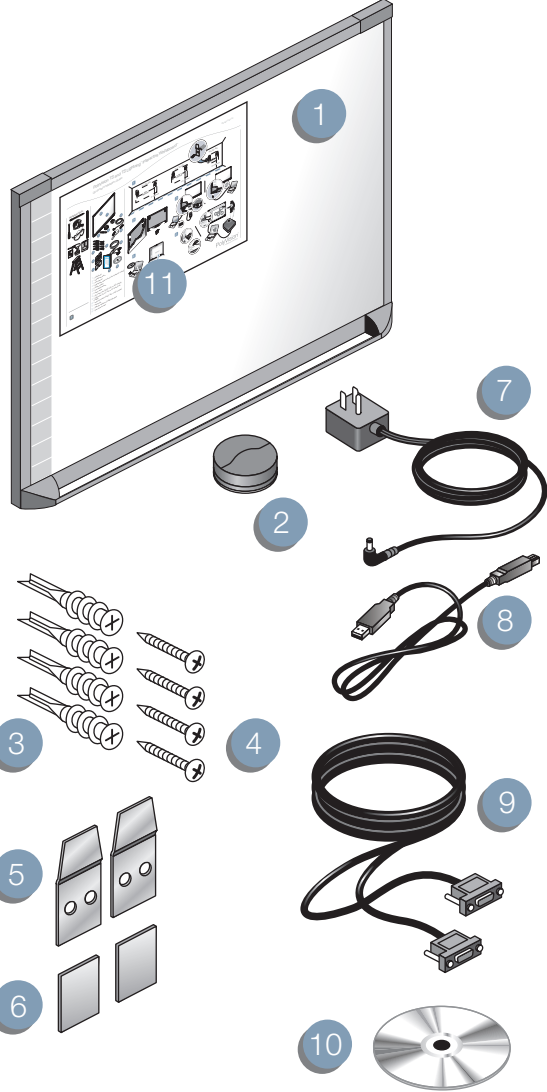
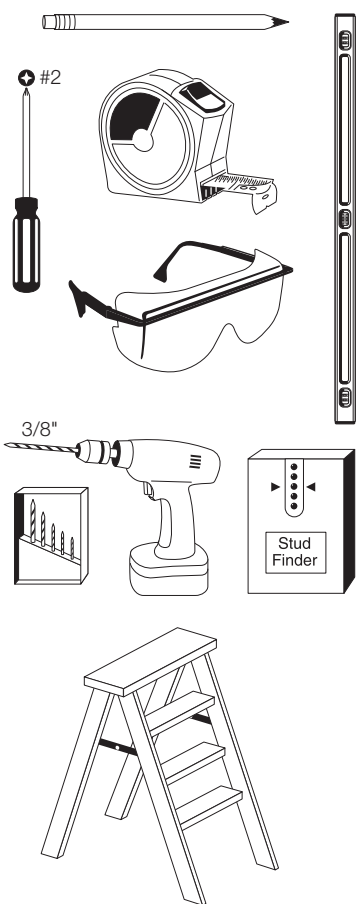


PolyVision TS and TS Lightning™ Interactive Whiteboard™

PN 580-0140-03

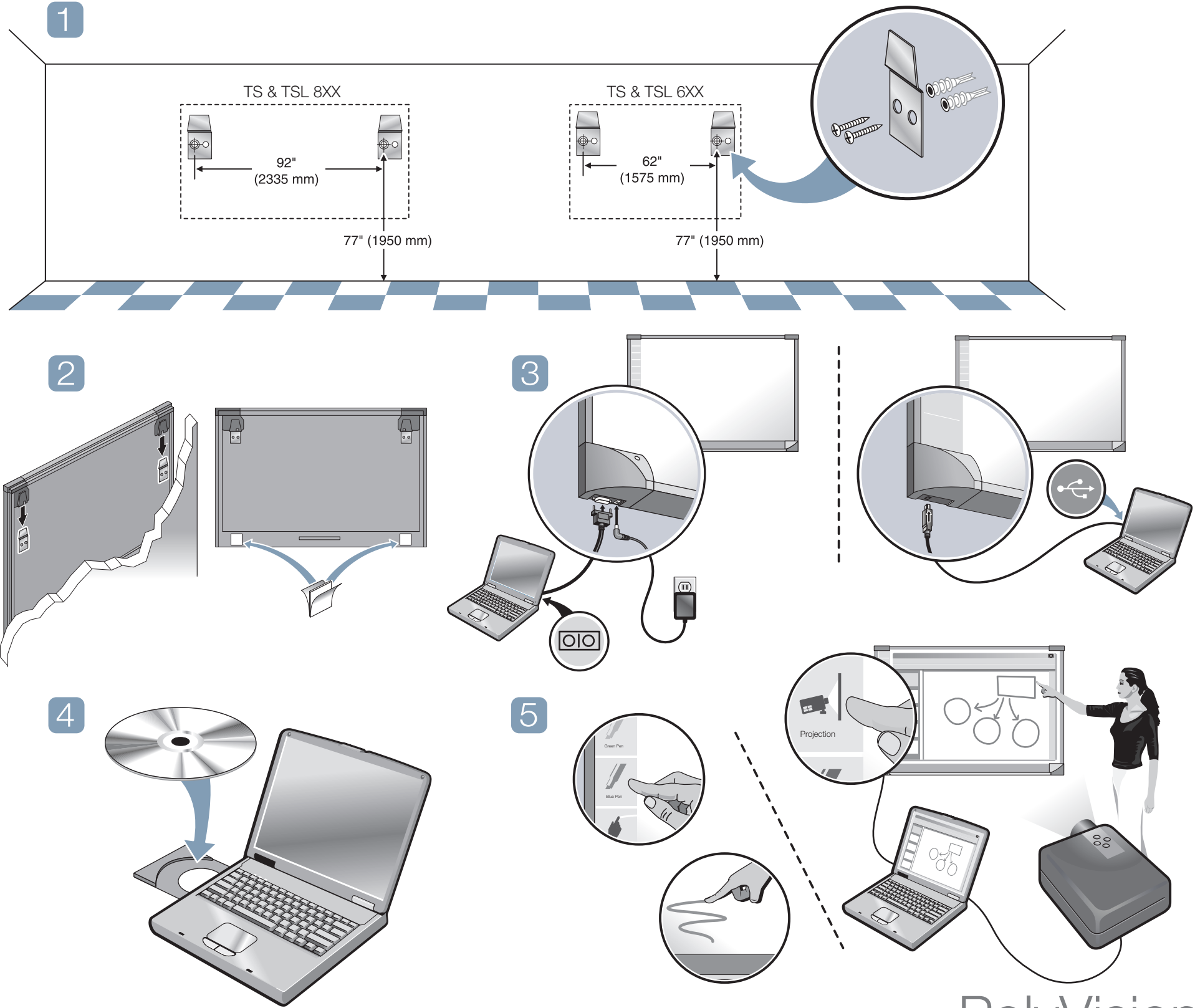
Quickstart Installation Guide

Required Tools



- 1 1 whiteboard
- 2 1 round eraser
- 3 4 self-tapping sheet rock anchors
- 4 4 Phillips screws
- 5 2 mounting brackets
- 6 2 Velcro strips
- 7 1 AC power cord (TS 600 models)
- 8 1 USB cable (TS 610 or 810 and all TSL models)
- 9 1 serial port cable (TS 600)
- 10 1 software CD (Mac/Windows)
- 11 1 peel-off quick start

? 800.620.POLY
678.542.3100
+32.089.32.31.30



PolyVision®
A Steelcase Company